

MAGNETS AND MAGNETIC SIDE RAIL SYSTEMS

SAF-T-MAG ON/OFF MAGNET

Improve Convenience and Safety

Saf-T-Mag magnetic holding assemblies are safer and easier to use than conventional magnets because the magnets can be turned OFF. The magnet will not turn on unless it is placed on a steel surface. Once the magnet is in place, simply use a wrench to move the magnet to the ON position. Once engaged, the magnet holds the siderail firmly in place. Because the magnet can be turned OFF, workers no longer face the risk of pinched fingers and injuries associated with loaf and button magnets.

Convenient, Easy Operation

Simply turn the knob 90 degrees to turn it OFF and another 90 degrees to turn it ON. No special tools are required to turn the magnet on or off.

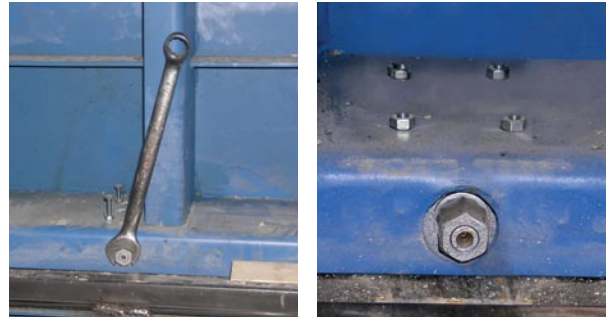
Once the switch is OFF the magnet assembly has no magnetic attraction and can easily be removed from the casting surface. Metal shavings and debris are not attracted to the magnet making cleaning a snap. With no magnetic attraction, stacking and storing magnets is no longer a problem.

The Revolutionary SAF-T-MAG

- Allows for quick form release and relocation
- OFF switch prevents accidental activation and the “klack” of magnets slamming into the form
- Eliminates the need for pry bars, hammers and disengagement tools
- Metal debris won't stick to magnets turned off
- Protects forms by eliminating bolt holes and welding
- When off, magnets won't stick together for easier storage

Magnet Specifications

Model	Adhesive Force	Length	Width	Height	Approx Shear Force
4" On/Off	500 lbs	3 3/16"	3"	1 1/2"	170 lbs
6" On/Off	1500 lbs	6"	3"	2"	500 lbs



The Saf-T-Mag can easily be turned ON or OFF. Simply use a wrench to move the magnet to the ON or OFF position. When off, the magnet has no magnetic attraction and won't collect metal debris.



The 500 lb capacity magnet can be used on 2-inch rails. The 2,000 lb capacity magnet can be used in larger rails.

For more information about magnetic steel form and side rail systems, contact **Hamilton Form Company** at 817 590-2111 or e-mail us at sales@hamiltonform.com.