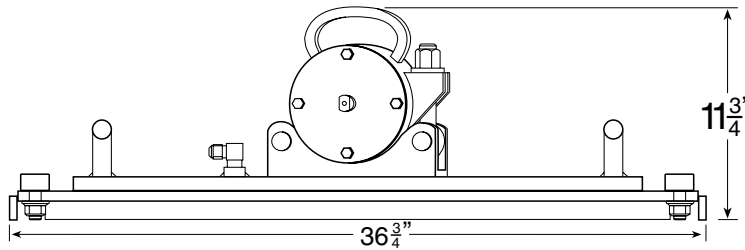
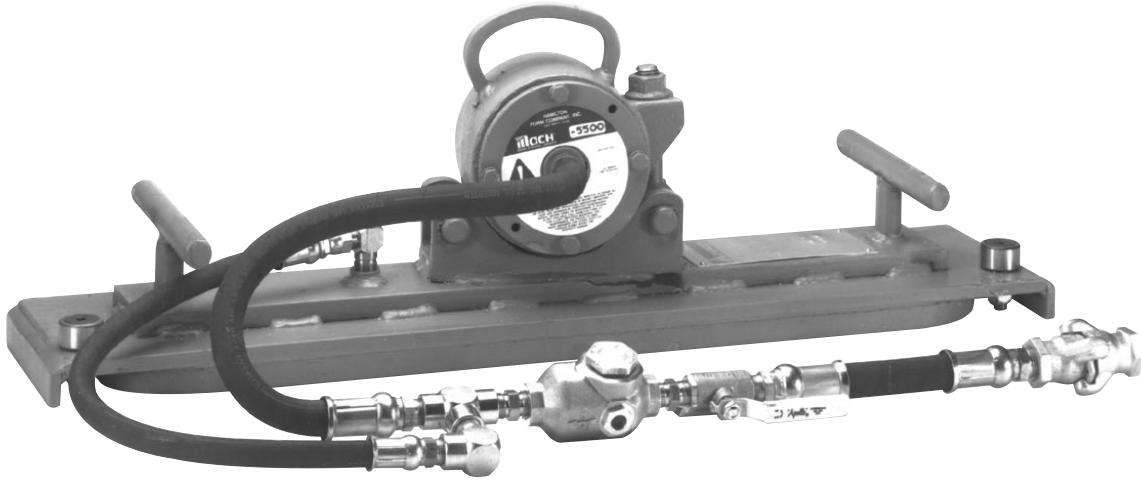


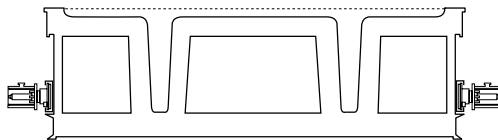
# CONTINUOUS TRACK VIBRATION SYSTEMS FOR PRECAST CONCRETE



VIBROTRACK™ Vibration System has continuous track sections welded to the form allowing an infinite number of vibrator positions.

The Vibrator base, containing an air-loc air pad diaphragm, is positioned in the continuous track and is self-supporting.

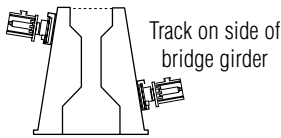
## APPLICATION



Double tee showing track location. Second track location required on most forms



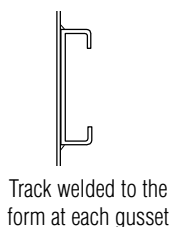
Track under steel casting table



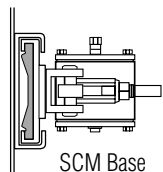
Track on side of bridge girder

When compressed air is turned on, the air pad inflates, locking the base in place, and simultaneously, starts the vibrator. When vibration is complete, turn the air supply off. This stops the vibrator and deflates the air pad. The vibrator can now be rolled along track to the next location.

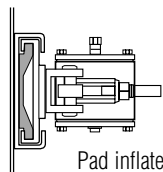
## OPERATION



Track welded to the form at each gusset



SCM Base free to roll in track with pad deflated



Pad inflates, locking SCM base securely in track

## VIBROTRACK™ SYSTEM PERFORMANCE DATA\*

MODEL	UNBALANCE	60 PSI			80 PSI		
		SPEED VPM	FORCE LBS.	CFM	SPEED VPM	FORCE LBS.	CFM
SCM-4400-36	.6	10000	1705	60	11000	2063	68
SCM-5000-36	.9	9000	2072	57	10000	2557	66
SCM-5500-36	1.2	8000	2183	57	8800	2641	66
SCM-6000-36	1.5	6800	1971	57	7800	2694	66